

The Thorough-Read News

Steeplechase Resident Homeowners Association, Inc.

Volume 12, Issue 1

January 2012



FROM THE CHAIRMAN

Steeplechase Board 2012 board@steeplechase.org

Chairman

Peggy Boydston 770-963-1572
chairman@steeplechase.org

Facility President

Jose Gonzalez 678-524-4164
facility.president@steeplechase.org

Community President

Cristina Cryan 678-382-9888
community.president@steeplechase.org

Communications Director

Sandy Parris 678-427-4867
communications@steeplechase.org

Budget & Operations Director

Nate Orrico 770-962-4668
budget.operations@steeplechase.org

Treasurer

Nicole Lister 678-464-5796
treasurer@steeplechase.org

Facility Social Director

Molly Brooks 770-546-7459
facility.social@steeplechase.org

Swim & Tennis Director

Bryan Schroeder 404-272-0174
swim.tennis@steeplechase.org

Community Social Director

Meg Lovejoy 404-944-1180
community.social@steeplechase.org

Secretary

Pat Wagner 770-963-6285
secretary@steeplechase.org

Webmaster

Dan Gustavson 770-841-6449
webmaster@steeplechase.org

Well folks, the New Year is here and we are looking forward to another banner year for Steeplechase Resident Homeowners' Association. But that can only happen with your help. While I'm sure you are tired of hearing it, once again we are entreating you to pay your membership dues.

This year we are going to begin a new accounting measure in which we will designate not just one overall "Capital Expense" line item in the budget, but will itemize for our three main, long-term expenses. We will have Tennis Courts, Pool, and Community maintenance long-term capital expense lines. If you are a Community member and don't choose to join the Facility, you will still benefit from the upkeep of the entrance walls, sprinkling systems, etc.

Why do we need to save money for the walls when they look just fine? Stop your car at the entrance on Steeple Run and look closely at the wall. It is the oldest wall and is deteriorating badly, with bricks falling off and eroding mortar. And the others will do the same as time goes on. A crumbling wall is the very last thing anyone needs to see when entering your neighborhood. We have been quoted five-figure numbers to replace that wall, and even a good repair job will cost thousands. This expense needs to be shared by every homeowner, including you! Community dues are only \$65, but if everyone pays their share we will have enough to continue daily maintenance, have lots of fun family events throughout the year, and still be able to set aside enough to face major repairs in the future.

And Facility members know that the courts need to be totally redone, as the life expectancy of a court is about 20 years and ours have passed that mark, and it shows. The pool is also aging and while it has been well maintained over the years, there are expenses on the horizon, new pumps, resurfacing, etc.

Facility membership is a bargain at only \$375 per year, with the opportunity to learn or improve your tennis game, get the kids lessons in tennis and/or swimming, or just relax and unwind with a good book or by swimming a few laps after work. We need your family to join if we are to keep an active and beautiful swim/tennis facility which will help maintain our home values and provide our families with countless recreational opportunities.

Like many, I'm broke after Christmas and may have to wait till the end of January to send in my payment. But this is an expense that gives such great return for money spent, that I manage to find room in the budget somehow. I hope you feel the same way. And if it is too tough to find the full amount, there is even a PayPal option to help with dues. Just go to www.Steeplechase.org to explore your options.

I don't know what to say to encourage you to support your homeowner's association, and we really need you, so please include membership in your family's budget this year. And if there is anything at all that we can do to make our association serve you better, please contact us at board@steeplechase.org. We would love to hear from you!

Peggy Boydston

FROM THE COMMUNITY PRESIDENT

Happy New Year Steeplechase Families!

As the days neared toward 2012, I wanted to jump on the "New Year resolution" bandwagon. I felt the push to make a pact, that in a few weeks' time I would more than likely break. *Why do I do this to myself?* The fact that I was setting myself up for yet another failed resolution frustrated me. I took it to prayer. I waited....waited and waited.

If you know me, I need a hit-me-over-the-head with a brick kind of answer. *Why was I not getting the answer I was looking for?* Then I heard it. One night as we were doing our family prayers, my youngest said, "Jesus, I am going to try very hard every day not to be sassy." This of course was days leading up to Christmas so she may have had an ulterior motive.

Regardless of her reason, it was the answer I was looking for. The bar is too high. Instead of making a life-changing, larger-than-life goal, why not make a daily choice? Every day, choose to do something different. If we can just take 2012 in baby steps, then our resolutions are more likely to be a culmination of successes than a year of failures.

Amazing how many of life's answers dwell in the hearts and minds of little ones. Life is truly not as complicated as we make it seem. If only we could take the time to look at the beauty and treasures life has in store. So dear friends, it is my wish that each and every one of you have a prosperous and fruitful New Year. A year of many daily choices, which bring you closer to your daily goal. Good luck!!

Cristina Cryan

FROM THE SWIM & TENNIS DIRECTOR

ALTA Winter Tennis Starts the weekend of January 7th-8th. Check online at www.reservemycourt.com to see which teams have home matches. Steeplechase has three teams this season: Mixed A, Mixed B and Senior Mixed. Schedules will also be posted on www.steeplechase.org.

SET Tennis Tournament - May 17-20th, 2012. Mark your calendars, we are in the planning stages. Anyone interested in volunteering contact committee@friendslovetennis.com. For more information, visit www.friendslovetennis.com.

Tennis Courts Reservations at Steeplechase

Steeplechase uses an online reservation system to sign-up for Tennis Courts: www.reservemycourt.com. Once on the website you will need to create a log-in.

1. Contact swim.tennis@steeplechase.org for the Access Code
2. Select your Home Facility "Steeplechase, Lawrenceville, Ga"
3. Create your custom user name and password.
4. Select "Reservations" from the left column to see the current calendar; you are ready to go.



Here are some guidelines to be aware of:

- If you are playing singles, reservations should be 1 hr.
- If you are playing doubles, reservations should be 2 hrs.
- The website will only allow (2) reservations per 7-day period.
- We have a lot of players currently in T2 or other individual leagues. Be courteous to these players as their matches may run long if they play a competitive 3-Set match.
- Plan accordingly; you have the ability to add Notes or League comments to your reservation. Try not to schedule right after a scheduled League Match to avoid waiting for that match to complete.
- There are (4) Courts available. Courts 1,2 &3 can be reserved, Court #4 is walk-up only and can not be reserved.
- Courts 1,2& 3 have lights, and can be reserved up to 10 PM every night.
- Reservations and access to the Courts are only available to Paid Facility Members. Facility Members are allowed to invite guests to play, as long as they do not live in Steeplechase. A Facility must be present while guest are playing.
- More detailed rules are found on the website www.steeplechase.org "Facility Info"

Also available on Reserve My Court is Volleyball Court reservation and the Pavilion Rental calendar can be viewed. Pavilion Rental is still handled by contacting secretary@steeplechase.org. As always, enjoy the Facilities, and do not hesitate to contact me with any questions/concerns.

Bryan Schroeder

GARDEN CLUB CORNER

Happy New Year from the Garden Club! We really enjoyed driving around to see all the Christmas lights and were really excited to see how many homeowners still like to decorate their homes. GREAT JOB by all!!! See below for a list and photos of the winning homes.

Now that the busy season is over, we need to start checking out our lawns and shrubs and getting them ready for 2012.

I've noticed recently that many of the leaves on my azaleas have turned yellow and I wanted to share with you that azaleas frequently develop yellow leaves during the winter. Normally, the older leaves turn yellow and die as the new green leaves emerge in spring. If the leaves are green on the upper parts of the branches but only the lower ones are turning yellow, then this is normal. Usually azaleas with yellow leaves in winter are no case for worry. They will drop off in the early spring as the new growth appears.

One of the first things to consider is to have a soil test done. This is important because that's the only way you'll know for sure whether you need lime and this is the time of year to spread dolomitic lime on those Bermuda lawns. It's a simple process and Gwinnett County Co-op Extension Service in Lawrenceville has the bags with instructions so either stop in at 750 South Perry Street – 4fl or call them at 678 377-4010 for details. There is a small charge for the test which is analyzed by UGA and you'll receive detailed results. And as a reminder, the office is staffed with Master Gardeners so you can call any time with questions about your shrubs, trees or lawn – for free. They provide a great service to our community.

The County Extension Office provides numerous services and listed below are some upcoming luncheon classes @ 12:00 noon that are also free. All you need to do is register: timothy.daly@gwinnettcountry.com or call 678 377-4010.

January 12	Controlling pests in and around the home
January 25	Soil basics for the home landscape
February 9	Tree care and selection for the homeowner
February 23	Proper pruning techniques for the home landscape

As a final note, I just want to remind you that if you have any plants you want to separate or remove from your landscape, we'll be glad to plant them around our common area grounds; just send us an e-mail at gardenclub@steeplechase.org or contact Sally Campbell or Nancy Orrico – we're in the directory.

YARD OF THE MONTH WINNERS - Holiday Lights Theme



Doug & Mary Benson
2031 Furlong Run



David & Mary Carter
2159 Sandown Drive



Jeff & Beth Brown
2169 Sandown Drive



Steve & Helen Gazda
961 Steeple Run



**** Special Mention: Nate & Nancy Orrico**
2090 Furlong Run

Note: Photos were taken at night to show the lights. We apologize if they appear too dark on the printed copy of this newsletter.

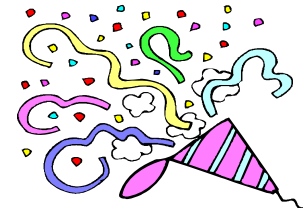
FROM THE FACILITY & COMMUNITY SOCIAL DIRECTORS

Hello and Happy New Year! We are excited and honored to be your 2012 Social Community and Facility Directors.

We plan on continuing the wonderful tradition already set forth by previous Social Directors-- while also maintaining the welcoming, fun, family environment that is Steeplechase! We will put a calendar in next month's newsletter to spotlight the activities for each month of the year. Please let us know if you have any questions, ideas, or concerns moving forward!

Thanks so much-

Molly Brooks (Facility Social) & Meg Lovejoy (Community Social)



A CHRISTMAS DISASTER STORY

Scenario:

It's Christmas Eve, you are out doing some last-minute Christmas shopping, all the stores are closing early and you are looking forward to dinner with friends and family over for the holidays. The groceries are purchased and you have everything ready for the big day.

Your cell phone rings and a neighbor tells that water is pouring out of your front yard. While you rush home, luckily some great neighbors have turned off your water... but now what? It's 2:00pm on Christmas Eve, who's going to fix this without charging you an arm and a leg?

We were given the name of **Diverse Plumbing** by a friend. What a blessing it was to have him come straight over, even though he had dinner plans out. He stayed 2 hours, fixed our problem, did NOT charge extra for after hours or a holiday call, and even checked in with us Christmas Day. Our bill was WAY less than I expected. I would highly recommend him to anyone looking for a plumber.

- Klarissa Reese

**Diverse Plumbing -
Master Plumber, Mike Soliday:
770-906-4958**



FROM THE EDITOR: NEIGHBOR TESTIMONIALS WANTED!

I know we've all experienced something similar to the story on the left. Whether you've had a home disaster, car trouble or any other dilemma that threw your day, week or month into a tailspin, it's nice to know there are still service-oriented folks out there we can call upon.

If you've been pleasantly surprised by someone who's gone above and beyond the call of duty to help you resolve a problem, please send your story and recommendation to me and I'll put a blurb about it in the newsletter.

THIS IS NOT AN OPPORTUNITY FOR YOU TO ADVERTISE YOUR OWN BUSINESS!

Rather, it's a way for us to help each other by recommending good, reliable people and businesses. Thank you!

Sandy Parris: 678-427-4867
communications@steeplechase.org

Open Letter to Steeplechase

To All: Mark, Corey and I want to extend our overwhelming thanks to the residents of Steeplechase, our neighbors for almost 3 years. As 2011 draws to a close we are in the final preparations of moving back to North Carolina. Tragedy and illness has been a difficult part of this past year and the kindness shown by the members of the community was heartfelt and truly appreciated.

We have met many wonderful friends here; Mark more so as 'The Mower Medic', but I would like especially thank Ed & Nancy Hawkins, Dan Gustavson, Denise Norton, Donna Redmond, Nora Martin (for helping Corey FINALLY pass Algebra), Paula for trying to get me out and about with her sunshiny smile, and so many more that I couldn't possibly list them all.

We have learned a new, true definition of 'neighbor' these past 3 years and wish we could pack you all up and take you with us! There isn't a soul there that even begins to compare. You made us feel at home from day one and we will miss each and everyone of you. Living here has been a rewarding experience and readjusting to 'country' living will be tough after all of the activities and kindness. Steeplechase is truly a fabulous place to live and we will miss the sense of community and camaraderie as we move back to our tiny one street neighborhood.

God Bless All in 2012 and on. Thank you again,

Mark, Kyle & Corey Cramer



**Steeplechase Resident Homeowners' Association (SRHA)
Enrollment Form—Deadline is March 1st***

Community – The Community Dues are \$65. By joining the Community, you are doing your share to help maintain our entrances beautifully landscaped and well lit. These features positively affect your home's property value. In addition, you will continue to receive the newsletter, enjoy Community social events, receive a Community Directory and much more.

Facility – The Facility Dues are \$440 and include Community membership and all its benefits. You and your family will also have access and use of the pool(s), tennis courts, playground, fishing pond, volleyball court, enclosed pavilion (fee for rental), and Facility member-only events.

Steeplechase Enrollment and Directory Form – Deadline: March 1st

Please fill out completely and turn in with your check payable to *SRHA*.

Check one of the following:

I wish to join the Community only for \$65 I wish to join the Facility and Community for \$440*

Name: _____ Spouse's Name: _____

Street Address: _____

Home Phone: _____ e-mail** : _____

E-mail address will be used for e-newsletters (ONLY method of newsletter delivery after March 2012), E-Blasts, crime alerts and special community announcements; will not be published in the Directory unless indicated below.

Number of children under 12, if any, living in your household: _____

This information will be used for party-planning purposes only and will not be published nor shared.

Would you like to be listed in the Steeplechase Community Directory? yes no

Do you want your e-mail address listed in the directory? yes no

Do you own your home? yes no -If you rent, please provide home owner's name and address:

Other Payment Options. Please visit www.steeplechase.org for more information on other payment options such as credit card and PayPal monthly installments.

*** Facility payment of \$440 is due on or before to March 1, 2012. After March 1st, a \$38 late fee will apply.**

**** If you are unable to receive the monthly Newsletter via E-mail and need a paper copy, please check here.** _____

**MAKE CHECKS PAYABLE TO SRHA AND DROP OFF IN FACILITY MAILBOX OR MAIL YOUR PAYMENT BY
MARCH 1, 2011 TO: SRHA, 1925 Furlong Run, Lawrenceville, GA 30043**

CLASSIFIEDS

HELP WANTED: TEENS

I am an Artist in Steeplechase looking for assistants. If you are a responsible teen who would like to earn spending money after school or on weekends, call me for more details:

Pat Holt
678-763-4305
2180 Sandown Court

Work from your home—I supply all materials!

DO YOU LIKE TO READ?

Book club in Steeplechase Area has
Openings for new members



BOOK CLUB

This book club meets the first Tuesday of each month at MacAllister's. For more information please contact Mary Goldsack at Mary_Goldsack@Gwinnett.k12.ga.us. Feel free to come early at 6:30 to visit and/or eat before the meeting.

Planning a Party? Rent the Pool Pavilion!

The pool pavilion is the perfect place for all your special gatherings and events!

Host your next gathering there and avoid having to clean your house.

The pavilion is great for family potlucks, birthdays, sports parties, or any other reason to celebrate.

Rental fee is \$35 *plus* a \$50 refundable security and cleaning deposit and is open to all paid Facility members. Extra fees may apply for parties of 20 or more and for outside guests. For more details and to book, contact Pat Wagner, Secretary at

770-963-6285 or at secretary@steeplechase.org

DESIGN BY DIANA

Do you want to update your Kitchen ?
Want a new look ?

Then "ANTIQU" YOUR OLD CABINETS!!

GIVE YOUR KITCHEN AN EXCITING "NEW" LOOK FOR THE NEW YEAR



Ask about my Steeplechase Discount
**INTERIOR DESIGN, FAUX PAINTING
& ROOM REDESIGN**
CALL 770-962-0788

Get your home ready for the "New Year!"

COUNTERTOPS

TOP FLOORS

LAMINATE

CARPET

WOOD

3705 Namasco Dr., Suite 6

VINYL

Suwanee, GA 30024

TILE

Office 770 • 271 • 7298

Great Prices Interest-Free Financing Free Estimates Shop-at-home Service

Make a huge difference in your home... in a hurry!

- Add tile to your master bath or a backsplash in your kitchen
- Add hardwood flooring or refinish existing
- Replace your carpet with luxurious Plush, Berber or Frieze
- Update your kitchen with Granite Countertops

Dan: 678-472-4535

Chuck: 404-392-8368

Ron: 678-414-4715



topfloors@earthlink.net
www.ga-flooring.com



Steeplechase referrals available

STILL The Only Choice www.THESteeplechaseAgent.com

Steeplechase Statistics for the 2011—17 Closings

Average Sales Price \$138,205

High Sales Price \$223,000 (Jason's Sale!)

Low Sales Price \$82,500

*Why leave money on the table? Jason's listings always sell for **MOORE!***



Jason Moore, CDPE, CRS, ABR

RE/MAX 100% Club

Sever Road Resident Since 1989

Office 678-730-7200

RE/MAX Legends

jasonmoore@remax.net

Each Office Independently Owned and Operated.



The above information is believed accurate, but not warranted. Sales statistics based on data from FMLS for 2011. Not meant as a solicitation of another broker's listing.

Revolution Remodeling OF GEORGIA, LLC

**For Your Home's
Restoration, Renovation, Repair,
Reconditioning and Remodeling Needs.**

We're in your neighborhood now doing repairs and renovations for some of your neighbors. Please call or e-mail us today for references – from someone you probably already know – and/or a free estimate.

Thank You

Now Accepting All Major Credit Cards



35 YEARS BUILDING & NEW
CONSTRUCTION EXPERIENCE



REFERENCES UPON REQUEST • LICENSED & INSURED

Fences, Decks, Porch Additions, Siding - Installation & Replacement, Door & Window Replacement, Interior/Exterior Trim, Painting, Drywall, Additions, Concrete, Shower Doors, Kitchen Remodeling, Tile, Roofing, Gutters, Garage Doors, Shelving, Custom Closets, Trey/Kofer Ceilings, Basements, Plumbing, HVAC, Electrical, New Construction, Storage Buildings, Insulation, Metal Roofs, Screens, Vinyl Siding, Brick/Stonework, Garage Floor Painting, Custom Inground Swimming Pools - Vinyl & Gunite

Blake Alewine
OWNER

office: 678-300-0041

cell: 678-409-8817

fax: 770.513.2121

revremodeling@bellsouth.net

No job too small or too big. We take pride in doing a good job at a fair price!

Link: revremodeling@bellsouth.net



1925 Furlong Run
Lawrenceville, GA 30043

RETURN SERVICE REQUESTED

PRSRT STD

US POSTAGE PAID

LAWRENCEVILLE, GA

PERMIT NO. 173

www.steeplechase.org

Stay current with Steeplechase news! Read your neighborhood newsletter!

2012 ADVERTISING RATES

As introduced during the November General Membership Meeting, we're introducing a new advertising pricing structure for 2012, aimed at rewarding our repeat *Thorough-Read News* advertisers! Read below for the pricing tiers as well as new guidelines. For the first three months of the year (January—March), the newsletter will be distributed to the entire neighborhood—430 homes, in addition to being sent via E-blast. In April, we will begin our regular E-blast distribution unless you've indicated a preference for the printed version.

Ad Size	Ad Cost /insertion	3 insertions <i>10% disc.</i>	6 insertions <i>15% disc.</i>	12 insertions <i>20%disc.</i>
Business Card	\$ 5	\$ 13.50	\$ 25.50	\$ 48
Quarter page	\$15	\$ 40.50	\$ 76.50	\$144
Half page	\$30	\$ 81	\$153	\$288
Full page	\$60	\$162	\$306	\$576

Classifieds—Free to all paid members; may not offer business services. Members 18 and under may advertise services for free.

Advertising Guidelines:

Format: Color or B/W, camera-ready in either .pdf or .jpg formats. Photos are highly encouraged!

Deadlines and payment: All finished artwork and payment must be provided to me by the 20th of each month prior to the upcoming issue. Checks should be made out to SRHA and delivered to my mailbox (Sandy Parris) at 2208 Sandown Drive. **Ads not paid for in advance will not run (sorry!).**

NEW: For multiple insertions, any changes to the original ad must be submitted electronically to Editor prior to next deadline.

**** If any ad provided requires additional revisions not provided by advertiser, Editor may charge an additional typesetting / layout fee; to be discussed prior to any work being done.**

Questions? Contact Sandy Parris at communications@steeplechase.org or at 678-427-4867.

**COMMUNITY
DIRECTORIES ARE
DONE—DID YOU GET
YOURS?**

Neighbor volunteers and Board Members were busy last month delivering the 2011—12 Community Directories to all paid Facility and Community households in Steeplechase. If you did not receive your directory, please contact me so I can get a copy to you --one per home, please.

Sandy Parris:
communications@steeplechase.org,
678-427-4867.