

# The Thorough-Read News

Steeplechase Resident Homeowner's Association, Inc. 1925 Furlong Run, Lawrenceville, GA 30043



## 2004 Steeplechase Board

### Chairman:

Scot Sherwin, 770.822.4517  
 chairman@steeplechase.org

### Facility President:

Bill Neidert, 770.995.7641  
 facility.president@steeplechase.org

### Community President

Nate Orrico, 770-962-4668  
 community.president@steeplechase.org

### Communications

Pamela Wilkinson, 678.377.5297  
 communications@steeplechase.org

### Legal & Budget Director

Peggy Boydston, 770-963-1572  
 legal.budget@steeplechase.org

### Facility Budget & Operations

Bruce Bagnasco, 770-962-0788  
 budget.operations@steeplechase.org

### Treasurer

Everett Fernandez,  
 678-442-9725  
 treasurer@steeplechase.org

### Facility Social Director

Bud Fletcher  
 770-962-8718  
 facility.social@steeplechase.org

### Swim/Tennis

Dan Clough  
 770-963-6766  
 swim.tennis@steeplechase.org

### Community Social Director

Sandy Parris  
 770-822-0437  
 community.social@steeplechase.org

### Secretary

Stacy Costas  
 404-664-7948  
 secretary@steeplechase.org

### Database

Miles Perper  
 678-985-2136  
 admin@steeplechase.org

### Webmaster

Vinnie Costa  
 404-664-7948  
 webmaster@steeplechase.org

## ► General Membership Meeting Scheduled - Thurs, November 11<sup>th</sup>

Greetings Everyone,

We had a small turnout for our neighborhood workday. THANKS SO MUCH to those who took some time out of their day to help out. We got a lot accomplished, but still need a few more things done around the neighborhood. Keep the calendar open for **Nov 21st** for another workday.

Please mark your calendars for **THURSDAY, NOVEMBER 11<sup>TH</sup>**! That is our **General Neighborhood Community Meeting** at the Jefferson Station Clubhouse (see directions below). We will be holding **elections for new Board Members**.

We need volunteers for the positions of Communications, Facility President, Legal/Budget, Facility Social, and Swim/Tennis, as far as we know right now. Take a look at the Position Description for each position, (page 3), and see which one interests you.

It is time for some of you out there to step up to the plate and take a few swings; keeping this neighborhood moving forward is everyone's responsibility. Working on the board takes only a few hours out of your month. Everyone can spare that, and you will get an opportunity to make a difference. Don't continue to leave it in the hands of the few. You will have lots of help and support from past and current board members if you have any questions.

Also at the General Meeting, we will be discussing and voting to **adopt our new covenants and bylaws**. We need everyone there so that we all understand what is going on and how we are going to get this implemented and accomplished. **This will affect everyone in our community, so we need your input and understanding. SEE YOU THERE!!**

As always, send your Comments, Compliments, or Complaints to [chairman@steeplechase.org](mailto:chairman@steeplechase.org)

Scot Sherwin, Chairman of the board

## Directions to Jefferson Station Clubhouse:

From Steeple Run:

Turn **Right** onto Sever Rd.

Take 2nd **Left** to Lebanon Rd.

Go to stop sign and take a **Right** onto Monticello Place.

Go to stop sign and take a **Left** onto Shadwell Way.

Go 0.3 miles and turn **Right** into parking lot. There is a white sign at the lot entrance "JSCA Club Members Only."



## Words From Our Presidents ...

### ► Work Session, Nov 21st

I would like to thank everyone who showed up for the workday. Several items were taken care of, but a few remain to be done. If you would like to help out, show up for our additional work session on **Nov 21st**, or please contact the board if you can work another time.

Now that we are closing in on the end of the year, we need people to volunteer to be on the board for 2005. There are several positions available, including my position. I have enjoyed my 3 years on the board, but I know I need to spend more time on my kid's activities. If you are interested in the Facility President's position, please give me a call and I can go over the details of the position. Thanks for everyone's support over the past few years! – Bill Neidert

### ► November News – Community

A special thanks for the members who worked at our Workday Session on Saturday, Oct. 16. Due to the low turnout, we have scheduled another opportunity for YOU to help finish our "To Do" list – I'd really appreciate it if you could be there... **Sunday, November 21.**

#### Increasing the Value of Your Property

Besides working at the workday session on our common areas, here are some ideas to increase your property value. Have you ever noticed when people list their home to sell, they get busy and give their home the curb appeal that might have been neglected for some time? Why not spend time NOW on ongoing maintenance, so you and your neighbors can enjoy the curb appeal.

Basically, it's the little things you do that increase your property value such as:

- ◆ Trim trees and bushes.
- ◆ Trim grass around fences.
- ◆ Edge the lawn as well as cutting the grass on a regular basis.
- ◆ Pressure wash the house, driveway and sidewalks once a year.
- ◆ Painting is recommended every 3 to 5 years. If neglected, the caulk dries and water seeps in and rots the wood from the inside.

- ◆ Remove clutter from view of the street, such as: garbage cans, firewood and any unsightly items.
- ◆ Limit street parking because it blocks view of children, it's hard for drivers to navigate around the cars – especially a teenage driver – and the property loses the curb appeal.
- ◆ Avoid parking vehicles on the front lawn.
- ◆ If you live next to an empty house, please pick up the newspapers that are left in the driveway.
- ◆ On garbage day, be sure to move your cans from the street by the end of the day.
- ◆ When bagging leaves, do not put them out on the street until your pickup day.
- ◆ Remember: Commercial vehicles are not to be parked on the street.

If you have any concerns or questions regarding our neighborhood, please call me anytime. Have a safe and Happy Thanksgiving! – Nate Orrico



Don't forget to vote! It's a privilege — and a responsibility!

**Election Day  
Tuesday, Nov 2nd**



Each office is independently owned & operated.

*For Real Estate where  
We “Taylor” to your needs!*

Contact:

**JIM or CHRISTINE  
TAYLOR**  
Realtors®

with

**THE TAYLOR TEAM**

678-775-2745

Email: [TheTaylorTeam@kw.com](mailto:TheTaylorTeam@kw.com)  
Website: [GeorgiaHomeScene.com](http://GeorgiaHomeScene.com)  
[www.SteeplechaseOnline.com](http://www.SteeplechaseOnline.com)

# Position Descriptions for 2005 Board of Directors!

**Chair** – Oversees the Board, schedules and manages monthly Board meetings, handles general neighborhood issues and contributes to the newsletter. Receives 50% off of facility membership.

**Facility President** – Oversees all facility property, pool management, contributes to the newsletter and handles issues regarding facility membership. Receives 100% off of facility membership.

**Community President** – Oversees community issues, maintenance of neighborhood entrances and landscaping, contributes to the newsletter. Receives 50% off of facility membership.

**Legal and Budget Director** – Maintains Steeplechase By-laws, handles local rezoning issues, works with the budget and with legal issues as necessary. Contributes to the newsletter when applicable. Receives 50% off of facility dues.

**Facility Budget & Operations** – Establishes and maintains Facility and Community budget, assists with neighborhood membership dues and coordinates Adopt-a-Project list and workday sessions. Contributes to the newsletter when applicable. Receives 50% off of facility membership.

**Treasurer** – Oversees funding in connection to the budget, checking account, money market account and accounts payable and receivable. Assists in maintaining the neighborhood database. Receives 100% off of facility dues.

**Facility Social Director** – In charge of the Memorial Day party, the Adult party and Labor Day and/or July 4th party. Assists with the Community Parties as needed. Maintains the budget for neighborhood social events. Contributes to the newsletter when applicable. Receives 50% off of facility membership.

**Community Social Director** – In charge of the Memorial Day parade, Easter party, Halloween party and two neighborhood garage sales. Works with the Facility Social Director regarding the budget. Receives 50% off of facility dues.

**Activities Director (Swim/Tennis)** – Oversees all swimming and tennis activities. Receives 50% off of facility dues.

**Communications** – Produces, edits and distributes the monthly newsletter, works with advertisers, produces and distributes the annual directory. Receives 100% off of facility membership.

**Secretary** – Records and manages board meeting minutes, general membership meeting minutes and schedules rental of the pavilion. Receives 50% off of facility membership.

*\* Gift of full or partial facility membership will be given at the end of each board term as stated in the by-laws.*

## A Place for Everything

**Power™ Sort** is the solution to years of scattered family memories. The Power™ Sort Box holds up to **2,400** 5 x 7 photos in a photo-safe, easy-to-use container. Sort by theme, year, friend or family member – it's your choice!



Includes 12 removable compartments, 12 removable dividers, an instruction booklet, a pocket inside the cover to hold notes and memorabilia and an ID pocket.

Call **770-614-8028**, (new #!), and ask me how you can

complete an ENTIRE ALBUM in 5 evenings!

**Pam Wilkinson**

Creative Memories Consultant

770.614.8028

pam@aCreativeMood.com



## You're invited to my Open House!

**November 7th - Richland Clubhouse**

This event is my way of saying **Thank You** for all the wonderful things you've done to support my business. I have a **special gift for you** — just for stopping by\*. The holidays are right around the corner, and I've got some incredible gift ideas for everyone in the family.

Please put this on your schedule, and I hope to hear from you soon. It's going to be a fantastic day! (Call if you need directions, 770.614.8028).

Sincerely, Pam Wilkinson

**\*If you can't attend, please give me a call so that I can send you a Holiday Gift Guide and Wish List to fill out. It's a convenient way to aid loved ones in completing their shopping, plus you get what you really want!**

**770.614.8028.**





# Steeplechase Community Bulletin Board

## ► Community HAPPENINGS for the Family

I was surfing the net and found some interesting events coming up for the whole family at the Gwinnett Center. Here are the basics and how to get more info:

**American Girl Fashion Show** At the Convention Center @ Gwinnett Center, November 13, 2004 at 10:00 AM and 2:00 PM. Contact [americangirlfashionshow@jlgnf.org](mailto:americangirlfashionshow@jlgnf.org)

**The Nutcracker** At the Gwinnett Performing Arts Center, Nov. 26 – 28 Contact [www.ticketmaster.com](http://www.ticketmaster.com). December 3–19 weekends only, contact the Gwinnett Ballet Theatre at 770-978-0188.

**Gwinnett Philharmonic Christmas Brass** At the Gwinnett Performing Arts Center, December 14 at 8:00 PM. Contact [www.ticketmaster.com](http://www.ticketmaster.com)

Enjoy!

– Sandy Parris, Community Social Director

## Classifieds

► Do you need help?  
Yardwork... Childcare... Pet sitting?

Call Tyler Nock (almost age 14) or Kristyn Nock (age 12). We can help! 770-339-0869.



► Emily's Pet Care

I have experience with pet care, and I love animals! For loving care of your cats, dogs, rodents, and fish, call me at (770) 339-7119. I will feed them, play with them, clean their box or bedding, and walk the dogs.

Emily Hawkinson, 12 years old, and very reliable.



### Enhance Your Community-Minded Image!

**SHARE**—Extend the benefits of your business relationship to your neighbors

**CARE**—Encourage buyers to designate a recipient that serves your community

**GIVE**—Help your buyers open their hearts as they close their loans

**RECEIVE**—Secure the best financing solutions for your buyers' specific needs.

If you use **Jason Moore** as your REALTOR, Elaine and Jason will add an additional \$200 contribution – making it a **total \$500 contribution!**

## The Sharing Advantage® Program

### Enrich Your Community Through a Neighborhood Network of Caring

Help make a positive difference—right in your own backyard!

With our **Sharing Advantage®** program, charity really does begin at home! Each time one of your buyers close a purchase loan with us, we'll make a \$300 contribution in your borrower's name to the faith-based or non-profit organization of their choice.<sup>1</sup>

We're here to provide you with a way to support worthy local causes – and set yourself apart. Share the advantages of our **Sharing Advantage** program.

**Elaine Teague**  
*Home Mortgage Consultant*  
**678-775-2033 Office**  
[elatea@earthlink.net](mailto:elatea@earthlink.net)  
[jasonmoore@remax.net](mailto:jasonmoore@remax.net)

**Jason Moore, ABR**  
*RE/MAX Professionals*  
**678-775-2137 Office**

1. Donations are made by the Wells Fargo Housing Foundation without any additional charge to the mortgage transaction. The recipient organization must have status under 501(c)3 of the Internal Revenue Code.

This information is for real estate, legal and financial planning professionals only, and is not intended for distribution to consumers. This information is accurate as of date of printing and is subject to change without notice.



## ► The Steeplechase Social Scene



### Nov 6<sup>th</sup>, A Big Day of Fun at the Courts!!! Steeplechase Round Robin Social

We are planning a Fall Round Robin Tennis Social for all Steeplechase neighbors, old and new, and you don't want to miss this event! All residents are invited to the "Round Robin Social" scheduled for **Saturday, November 6<sup>th</sup>**. The cost to enter is \$25 per person – and the money will be used for repairs and upgrades to the Steeplechase tennis courts.

Details: Each player will be given a number and will be randomly selected with a partner and opponents to play 4 games. The whistle will sound, new partnerships will be announced, and the games begin again. We will utilize all 4 courts, so there will be some socializing time between the mini-sets.

Yes, there will be some winners and some prizes, but the socializing with tennis will be an event to remember. Plan to attend the fun-filled day or half-day (whichever you choose), concluding with an informal party at 7:00pm.

More details along with the entry forms will be e-mailed within the week so please - **MARK YOUR CALENDARS FOR NOV 6!**

– Peggy Boydston, Nancy Orrico, Sally Campbell & John Waller

## ► Welcome, New Neighbors!

### Stan, Jodi and Mikaela Holt

1090 Steeple Run  
770-682-3821  
Move-in date: 8/14/04

### Glenn, Karen, Cameron & Kirsten Luteraan

1250 Steeple Run  
678-376-0221  
Move-in date: 8/26/04

### Richard and Shawn Scott

1205 Midland Way  
770-963-7267  
Move-in date: 8/1/04

If you know of a family who has moved into the neighborhood, whom we have not welcomed, won't you give us a call? Cathie Weschrek, (770) 277-9918 or Donna Redmond, (770) 962-3663 or by e-mail at [welcome@steeplechase.org](mailto:welcome@steeplechase.org).

## ► Community Yard Sale Is A SUCCESS!

The Fall Community Yard Sale held Oct. 1 – 2 was by all accounts, quite successful. Thank you to all who participated and contributed your \$5. I always drive around during yard sale time to do a little shopping, see how the sellers are doing, and to see if anyone is "freeloading" – conveniently having a yard sale on the same weekend but not paying for their share of the advertising. I was pleasantly surprised to find only one resident in this case; I guess people are getting honest!

One request I have of you who participate next year is to **please** try to let me know by the deadline, or as close to it as you can! Newspaper ads have their own tight deadlines, and it's difficult to gauge whether we can afford the ads until I hear from you. This past time, I cancelled the ad in the AJC because I had only heard of six homes by deadline time! Fortunately, we still had the ad in the Gwinnett Daily Post and also the signs. We could've done both if I had known. At any rate, thanks for participating, and see you in 2005!

If you have any suggestions for next year, I'd love to hear them, just send me an email at [communications@steeplechase.org](mailto:communications@steeplechase.org).

Thank you, Sandy Parris

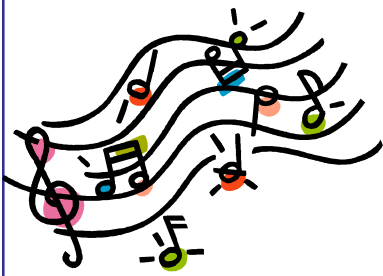
## Steeplechase Events Calendar, 2004

Check out the following dates and mark them in your calendars -- Sandy Parris and Bud Fletcher.

Date	Event	For Whom
Nov 2	Election Day	Please take time to vote!
Nov 6	Round Robin Tournament & Social	All - Open to Public
Nov 11	General Membership Meeting & Elections, 7pm.	All members
Nov 21	Neighborhood WorkDay	All neighbors!
Nov 25	Thanksgiving Day	Count your blessings!



Give Thanks



Nora W. Martin  
 (Located in Steeplechase)  
 770-822-2013  
 wolf1193@bellsouth.net

## Nora's Piano & Tutorial Studio

Offering  
**Beginning Piano and Music Theory**  
 to all ages  
 and  
**Academic Tutoring**  
 through Middle School  
 with an emphasis on the basics of reading,  
 grammar, writing, mathematics and science.

Call to discuss your individual needs:

**770-822-2013**

**"To Do" List Out Of Control?**  
 One call does it all with Mr. Handyman.

**CALL MR. HANDYMAN FOR ALL YOUR HOME MAINTENANCE AND REPAIR NEEDS!**  
**CALL 678-377-7717**

**Mr. Handyman**

**TO DO**  
 Inside  
 - Replace kitchen cabinet doors  
 - Fix loose door  
 - Repaint wall  
 - Fix ceiling  
 - Fix window  
 Outside  
 - Clean gutters  
 - Fix broken fence  
 - Repair deck  
 - Fix door  
 - Fix roof  
 - Fix yard  
 - Fix driveway  
 - Fix lawn

## ► Golden Triangle Community Association News – Pam Ledbetter

How many of you have children involved in sports? Most of us do, and each season we all collect money to purchase a gift for the coaches and throw a big party. I would like to ask you to consider collecting money for Coaching for a Cure instead.

Coaching for a Cure is a program that I support, which raises money for pediatric cancer research. It is a great way to pull together as a team and show our kids how to reach out and help other kids in need. I have attached additional information below. Please feel free to call me with any questions at 678-377-8593.

I will be distributing flyers to all the soccer teams this weekend. If you need flyers to pass out to your sports teams, just call. Thanks again for your consideration! – Pam



### Helping Kids Kick Cancer!

[www.coachingforthecure.org](http://www.coachingforthecure.org)

by Grainne Owen

We have created a program called “Coaching for the Cure,” which was begun in honor of our nine year old son, Killian, who had leukemia. We lost Killian to the disease last year, but he inspired us to help raise money for pediatric cancer research.

The concept is simple. Typically, team parents chip in money for coach’s gift at the end of the season. Donating this money to

Coaching for the Cure becomes your gift to your coach, and that money can go toward developing new targeted therapies for children like Killian who have cancer.

By raising money for Coaching for the Cure, your team becomes part of a bigger team — the doctors, nurses and researchers dedicated to ending childhood cancers.

All funds go directly to the AFLAC Cancer Center at Children’s Healthcare of Atlanta. In return, each coach is given a certificate and an original t-shirt honoring him or her for “Coaching for the Cure - Helping Kids Kick Cancer!” For questions, call Diane Vaughan of the Children’s Healthcare of Atlanta Foundation at 404.785.7312, or me, Grainne Owen, at 678.277.9849, or visit our website at [www.coachingforthecure.org](http://www.coachingforthecure.org)



# ► Citizens' Update

– Pam Ledbetter, Golden Triangle Community Association

Hi All,

Many of you know Gip Gayle and are aware of the horrible hunting accident that happened a year ago. For those of you who are not, Gip Gayle is a former student of Collins Hill High School and his family lives in McKendree Park. Go to [www.gipgayle.net](http://www.gipgayle.net) to read his story.

Gip has undergone many surgeries and has more planned for the near future. I wanted to let everyone know about two upcoming fundraisers. November 1st will be the 1st Annual **Lend-a-Hand Golf Tournament**, and then on November 7th, Lil River Grill is hosting a **Lend a-Hand Dinner + Silent Auction**.

These events are efforts to raise funds for the Gayle family and his medical expenses. Read the ad at right, and help if you can. – Pam



You are cordially invited Sunday, **Nov 7th at 6:00 p.m.** to Lil' River Grill. "Lend a Hand When You Can," and Strides for Strength are having a fundraiser for the Gip Gayle Medical Fund.

We've accomplished a great deal, but so much more must be done. Please encourage your friends, family, and neighbors to attend what is sure to be a wonderful evening, filled with live music, fabulous food, and a silent auction.

A minimum donation of \$100 per couple will be accepted as your RSVP. Space is extremely limited, so don't

delay! Make your reservation by mailing your check to:

**Lend a Hand When You Can,**  
c/o Karyn Thomas,  
1483 Shoresedge Court  
Lawrenceville, GA 30043.  
Make checks payable to **Strides for Strength**.

For more information and directions to **Lil' River Grill**, (located at GA 120 and Riverside Pkwy), or to read about Gip Gayle, please visit [www.lilrivergrill.com](http://www.lilrivergrill.com).



*Gip Gayle, before his accident*



[www.hillsideLending.com/rate\\_track.htm](http://www.hillsideLending.com/rate_track.htm)



[www.HillsideLending.com](http://www.HillsideLending.com)

**Jeffrey Pinkerton**  
**Mortgage Consultant**

**Tel: 770-418-1126**

**Cell: 678-488-5159**



A Georgia Residential Mortgage Licensee #17844

2250 Satellite Blvd. Suite 155, Duluth, GA 30097

It can sometimes be difficult to decide whether or not you truly are on track. Should you refinance your current mortgage? Should you pay additional principle to pay your mortgage off more quickly? Should you refinance your loan to a shorter term? Should you take some cash-out to invest? Or should you keep what you've got?

A quarterly RateTrack Report will help you make the best decision based on current interest rates, programs and scenarios specific to your loan. Signing up only takes a few seconds and is a great way to keep yourself informed of available options to help you make a decision that best fits your need... a great way to stay on track!

# Free Review

Do you have the right investments in place to meet the financial challenges ahead?

At Edward Jones, our business is to help people find solutions for their long-term financial security. If you would like a free review of your portfolio to see if it is appropriate for your long-term goals, please call or stop by today.



**Don Bradford**  
205 West Pike Street, Suite 100  
Lawrenceville, GA 30045  
Phone: 770-682-3075  
FAX: 866-251-0325  
[www.edwardjones.com](http://www.edwardjones.com)

**Edward Jones**<sup>®</sup>  
Serving Individual Investors Since 1871



**"We've heard some companies aren't selling homeowners' insurance anymore."**

***I still offer Homeowners Insurance!***

**And you may qualify for our new low rates and discounts.**

**Call me,  
Toby Blackwell, at 770-932-5097**



Allstate Property & Casualty Company Northbrook, IL



**Tutoring,  
K-grade 8**

**K - 5, any subject  
Grades 6-8, Language Arts or  
Social Studies**

**Available days or evenings, and  
Home Schoolers are welcome.**

**Jennifer Goff  
678.407.4881  
[jjmgoff@earthlink.net](mailto:jjmgoff@earthlink.net)**

**Certified Teacher,  
Steeplechase Resident**



## ► Attention, DOG OWNERS!

Recently, there have been a few **unleashed dogs** roaming around the neighborhood. This is a **huge nuisance** to those of us who walk and run, often with our children and our own leashed dogs. In addition, many neighbors have reported dogs tearing their trash bags and dropping unwanted “presents” on their yards.

While many dogs run away from home on rare occasions, there are those who are left outside on a regular basis. Please remember that there is a Leash Law in Gwinnett County. Be a responsible dog owner and neighbor!

**If you're having an ongoing problem with an unleashed dog, contact Animal Control at 770-339-3200.**



## GUILT-FREE PUMPKIN SWIRL CHEESECAKE

*Contributed by Sandy Parris, from her sister-in-law's recipe*

### **Crust:**

1-1/2 boxes *SnackWell's cinnamon graham snacks, crushed*  
4T *brown sugar*  
4T *flour*  
1/2 cup *apple juice -concentrate- (not apple juice!)*

*Preheat the oven to 350F.*

*Combine the crust ingredients in a food processor. Lightly spray a 10-inch spring form pan with cooking spray. Evenly distribute crust batter along the bottom and up the sides of the pan. Bake for 20 min. Leave the oven on.*

### **Filling:**

1-1/2 cups *yogurt cheese*  
1/4 cup *nonfat yogurt*  
3/4 cup *granulated sugar*  
1 tsp. *vanilla extract*  
6 T *nonfat liquid egg substitute (Egg Beaters)*  
1 tsp. *brandy extract (or Frangelico liqueur) \*\*optional\*\**  
1 cup *pumpkin puree (not solid pack)*  
1 tsp. *Schilling Apple Pie spice (or 3/4 t cinnamon + 1/4 t nutmeg + pinch allspice)*

*Using an electric mixer at medium speed, beat the yogurt cheese, yogurt, 1/2 cup of the sugar, and the vanilla extract until well-blended. Add the egg substitute, 2T at a time, mixing well after each addition. Remove 1 cup of the mixture and set aside. To the mixing bowl, add the brandy extract, pumpkin, and spices. Mix well with an electric mixer until all the ingredients are well-incorporated. Pour on top one side of the crust. Pour the reserved cup of yogurt mixture on the other side. Shake lightly to even the top. With a dinner knife, cut through both batters several times in a circular motion to create a marbled effect.*

*Bake for 1 hour, until firm. (check after 45 minutes - A) Remove from oven and place on a cooling rack. Run a knife along the sides of the pan to loosen the cake. Cool for 30 to 40 minutes in the pan and then remove the sides. Chill in the refrigerator for 2 to 3 hours before serving.*



**WANTED! WANTED! WANTED!**

**5 Steeplechase homes needing windows as Winter's chill approaches**

**YOU KNOW YOU NEED WINDOWS!**

New windows add value and comfort to your home, reduce interior fading, cut outside noise.

Pay yourself, not a gas or electric company!

**HEAT MIRROR™ Windows**  
**Save 35% on fuel**

**Written Lifetime Warranty**  
**Buy 10 & Get 1 window FREE**

Free no-obligation estimates • Offer expires 12/15/04



**"Improving Homes for Life"**  
**(404) 391-2578**

[www.ProCoteAtlanta.com](http://www.ProCoteAtlanta.com)

Ask about Tex-Cote & Gutter Protection

# EXPRESS

## COPY PRINT & SHIP

We are your  
"One stop Printing & Shipping Center"

Located next to Kroger in the  
Dean Taylor Shopping Center

2133 Lawrenceville Suwanee Rd., Ste 14  
Suwanee, GA 30024

678-376-0122 • fax 678-376-0198

"Sponsoring Your Steeplechase  
Newsletter"

## ► Inside This Issue...

From the Chair, General Meeting & Elections Scheduled .....	Page 1
Messages from Officers .....	Page 2
2005 Board of Directors Elections: Position Descriptions ....	Page 3
Community Bulletin Board, Classified Ads .....	Page 4
Steeplechase Activities Calendar, Social Scene .....	Page 5
Golden Triangle Community News.....	Page 6
Community News: "Lend a Hand When You Can" events ....	Page 7
Notices, Recipes .....	Page 9

## November 2004

<http://www.steeplechase.org>

The **Official** Newsletter for the  
Steeplechase Homeowners'  
Association

SRHA 1925 Furlong Run, Lawrenceville, GA 30043

## ► THOROUGH-READ NEWS ◀



<http://www.steeplechase.org>

### Newsletter Ads Rates & Sizes

#### Business Ads:

- Half pg, \$25, (4.5" H x 7.5" W)
- 1/4 pg, \$15, (4.5" H x 3.5" W)
- Business card, \$5

#### Classified/General Ads:

- Classified ad, \$5
- Kids 18 & Under, FREE  
(for paid Community or Facility member families).

#### Send ads to: SRHA

c/o Pamela Wilkinson  
5240 Overbend Trail  
Suwanee, GA 30024

Call: **770.614.9085**, or email:  
[communications@steeplechase.org](mailto:communications@steeplechase.org)

The deadline for each issue is the  
**15th** of the preceding month.

PRESORTED  
STANDARD  
U.S. POSTAGE PAID  
LAWRENCEVILLE, GA  
PERMIT NO. 95